

TEAM Springfield

News from Your
Springfield Public Agencies

Willamalane Park and Recreation District ★ Springfield Public Schools ★ City of Springfield ★ Springfield Utility Board

A New Hamlin Middle School Set to Rise



The new Hamlin Middle School will feature an exciting modern design and an innovative STEAM curriculum designed for 21st-century learning.

"We are so grateful to our community for approving this bond and allowing us to do this important work."

SUE RIEKE-SMITH, Springfield Public Schools Superintendent

SPRINGFIELD PUBLIC SCHOOLS

Drivers on Pioneer Parkway will be able to see Hamlin Middle School, the keystone project of the 2014 school bond, coming to life next to the current school. Crews worked all summer preparing the foundation and setting the utilities so returning students can watch the building grow with them throughout the year.

"We are so grateful to our community for approving this bond and allowing us to do this important work," said Springfield Public Schools Superintendent Sue Rieke-Smith.

The project is the largest and most visible project funded by the \$71.5 million bond measure, which also provided much needed safety and technology upgrades to improve learning environments across the district. In

the coming weeks, the frame of the new structure, located on the 22-acre site of the former Moffitt Elementary School, will take shape. The new school is expected to be ready for use in winter of 2017.

Capital improvement projects funded by the bond measure included classroom additions, improved parking areas and HVAC equipment. Upgraded technology included wireless infrastructure across the district, new computers, modernized classroom equipment (including professional/technical equipment) and a unified communication system.

Design Process: Hamlin's design process has followed Springfield Public Schools' philosophy of designing

continued on page 2

Proposed Fuel Tax Increase Dedicated to Street Preservation and Repair

CITY OF SPRINGFIELD | The city of Springfield maintains a street system that provides safe and reliable travel and supports business. However, current revenue is not enough to pay for the backlog of street preservation and repair projects that total approximately \$30 million.

In May, the city surveyed Springfield registered voters to evaluate two alternatives for funding street

preservation and repair backlog projects. The preferred option was a fuel tax increase over a property tax increase. The Springfield City Council voted unanimously to refer a ballot measure to Springfield voters for a Nov. 8 vote proposing an increase to the local fuel tax rate of 3 cents per gallon for a total tax of 6 cents per gallon.

continued on page 3

Recreational Marijuana Retailers' Tax

Measure Would Impose 3% Tax on Recreational Marijuana Items Sold within Springfield by Retailers

CITY OF SPRINGFIELD | Passage of this ballot measure would enact an ordinance approved by the Springfield City Council imposing a 3 percent tax on the sale of recreational marijuana and recreational marijuana-infused products in OLCC-licensed outlets in the city.

Background: In November 2014

Oregon voters approved ballot measure 91, legalizing the possession, cultivation and sale of marijuana by adults aged 21 and older.

In 2015 the Oregon Legislature approved House Bill 2041 imposing a state tax of 17 percent on recreational marijuana sales effective Jan. 1,

continued on page 3

Residential Customer

What's Inside...

Springfield High Design Program	2
Keep Your Home Warm This Winter . . .	2
Willamalane Pickleball	3
SUB Customer Appreciation Week . . .	3
Willamalane Superintendent News . . .	5
Welcome Back to School.	6
Spotlight on LED Lighting	6
Park Upgrades and Updates	7
Springfield Winter Events Calendar . .	8

*Together, we share ideas,
energy and resources to
deliver projects that
benefit our community.*

Springfield Public Schools
525 Mill Street
Springfield, OR 97477

NON-PROFIT ORG.
U.S. POSTAGE
PAID
EUGENE, OR
PERMIT NO. 625
ECRWSS

Hamlin Middle School

Continued from page 1

buildings not just for appearances, but also as truly functional spaces for students and staff.

The 18-month Education Specifications process, or Ed Specs, had architects collaborating with teachers and community members to develop a model for what a 21st-century middle school should look like.

The team of parents, board members, district employees and representatives from BBT Architects then rolled up their sleeves to design a beautiful, cutting-edge educational facility that will serve as a model for new district middle schools with an innovative approach to integrated education.

STEAM Curriculum: As the district’s first STEAM school, with a curriculum providing an integrated approach to exploring science, technology, engineering, art and math, the school will feature collaborative and flexible “maker spaces” designed for 21st-century learners.

“We want the building to be a functional space that inspires students to learn, and also reflects the application of creative and innovative thought,” said Rieke-Smith.

Innovative Materials: The building itself will serve as something of a learning lab, featuring innovative products such as cross-laminated timber, the latest product from the Oregon timber industry, and electro-chromic tints on the windows, which can be electronically controlled for high efficiency.

“Students will be able to learn the science behind the building and the innovative products around them,” said Rieke-Smith.

Brett Yancey, chief operations officer for the



Hamlin’s interior spaces are designed to be flexible and collaborative, such as “maker spaces” that allow students room for hands-on projects.

district, says the team is really excited to watch the building come to life. “The project represents the community’s support and commitment to the students in our district,” he says, “and the thoughtful hard work of many. We’re anxious to see the product of this investment in our community.”

Along with the innovative curriculum and stunning design, the site will also be the home of the community’s only artificial turf field along with a newly designed track. The school will also feature baseball facilities that will serve as a hub for area sports teams for years to come.

Graphic Design Program Added to Springfield High Offerings

SPRINGFIELD PUBLIC SCHOOLS | Springfield High School students return this year to a newly added graphic design program, furthering the goal of building career pathways programs to support students in pursuing both secondary education and living wage careers.

Springfield Public Schools is committed to career technical education, or CTE, programs to keep students engaged and excited about their schooling and the connection it has to their future. During the recession when budgets were tight, Springfield held on to basic programs such as metals, drafting and auto mechanics, knowing the impact they have on student success.

“We know at least here at Springfield High School that students who take at least one CTE course graduate at a rate of around 82 percent, compared with overall graduation rates of around 67 percent,” says

Springfield High School Principal José da Silva. “This shows that if we can engage students in their education in real ways we will have a direct impact on successful outcomes for our students.”

SHS has long sought to enhance the graphic design program, and this year students will also enjoy a newly upgraded and redesigned lab, complete with new computer equipment, thanks to a generous donation from Dr. Ken Singer and his wife, Kenda.

The Singers approached da Silva after learning of the school’s commitment to CTE and its desire to support the community’s success. The first group of 90 students begins this fall, and the program will grow into a three-year track in the future.

“We’re extremely excited about the opportunity to offer this program, and it would truly not have been possible without the generous support of the Singers,” said da Silva.



How to Keep Your Home Warm This Winter

SPRINGFIELD UTILITY BOARD | Leaves will soon be falling, and with them, temperatures. Before you turn up the heat, think through how you’ll keep your house cozy this winter.

Here are some top tips on saving money and electricity:

- Use a programmable thermostat to turn your home’s temperature down to 62° at night and 55° when you’re gone. For every degree you raise your thermostat, your heating bill generally goes up 3 percent.
- When you’re home, set your thermostat to 68° and use sweaters and blankets to warm up.
- With zonal heat (ceiling, baseboard, wall), you can heat only the rooms you are using. Close off rooms not in use.
- Maintain your furnace or heating system with a yearly check-up and clean furnace filters monthly.
- Keep curtains or furniture away from heat vents and registers.
- Circulate heated air in your home. If warm air sits by your fireplace or furnace, use ceiling or portable fans on a low setting to spread the heat around.
- Seal air leaks in your heating system. Make sure ductwork is airtight.
- Seal leaks around doors and windows using expanding foam and weather stripping, and seal leaks around power outlets by installing inexpensive foam gaskets. These products can be found at any hardware store and are easy to use.
- Prevent air leaks around your fireplace by closing dampers and fireplace doors.
- Use drapes as another layer of insulation over your windows during cold weather.

Connect with TEAM Springfield on Social Media

Ask questions, alert us to your concerns and get the scoop on interesting events when you connect with TEAM Springfield agencies on Facebook, Twitter and YouTube.

	Facebook	Twitter	YouTube
City of Springfield	facebook.com/springfieldor	twitter.com/spfldoregon	youtube.com/springfieldoregon
Springfield Police Dept.	facebook.com/springfieldpolicedepartment facebook.com/springfieldanimalcontrol	twitter.com/spdoregon	
Springfield Public Library	facebook.com/springfieldpubliclibrary	twitter.com/wheremindsgrow	
Springfield Public Schools	facebook.com/springfieldps	twitter.com/springfieldps twitter.com/springfieldsupt	youtube.com/springfieldps1
Springfield Utility Board	facebook.com/springfieldutilityboard	twitter.com/subutil	
Willamalane	facebook.com/willamalane	twitter.com/willamalane	youtube.com/willamalane

Grace on the Court

A Quirky Sport Called Pickleball Improves Coordination, Confidence

WILLAMALANE PARK AND RECREATION DISTRICT | Jean Walker has a tough time holding a coffee cup steadily. Manual stability can be difficult for people like Walker who have Parkinson's disease. The disorder affects the central nervous system, which can interfere with movement and cause tremors. But if you saw Jean on the pickleball court, you'd be none the wiser. She moves with grace and confidence, delivering solid serve after solid serve and returning the Wiffle ball with ease.

Walker rediscovered this physical confidence after joining in



Jean Walker, who has Parkinson's disease, moves assuredly through a game of pickleball at Willamalane Center.

Willamalane's four-week pickleball course developed specifically for people with Parkinson's disease. She and her husband, Doug, play together to stay active and social. Pickleball is one of the fastest-growing sports in the nation, especially among adults ages 50 and older.

Roger Schaljo, instructor and coordinator of the Emerald Valley Pickleball Club, recognizes pickleball's many health benefits. "The biggest health effect I've had from pickleball is a steady increased heart rate," Schaljo says. "It gets my heart rate up and it stays up, which is excellent for my overall health."

Schaljo says some of the people who play with him regularly say pickleball has helped them increase stamina and maintain a healthy weight. While pickleball is a great low-impact activity for adults 50 and older, Schaljo welcomes people of all ages and abilities to the beginner drop-in pickleball classes. These run Tuesdays and Thursdays from 12 to 2 p.m. at Willamalane Center.

Planning on joining in? Make sure to say hi to Walker and others with Parkinson's who are regulars at drop-ins.

Street Repair

Continued from page 1

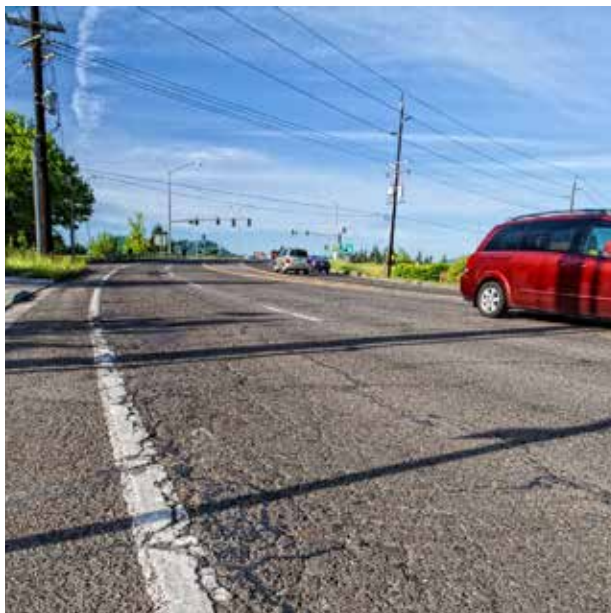
If passed by voters, measure 20-252 would:

- Raise approximately \$1.1 million each year in additional revenue dedicated for street preservation and repairs projects and help reduce the backlog. About one-third of revenue each year would go toward neighborhood (residential) streets and two-thirds toward preserving and repairing the busiest streets (collector and arterial streets).
- Include annual report documenting projects funded.
- Not fund additional city staffing.

The city would use the additional revenue from an increase in local fuel tax on high-priority street preservation and repair projects, fixing streets before it becomes necessary to reconstruct them, which can be up to 10 times more expensive. Street preservation and repairs extend the usable life of a street.

Fuel taxes provide steady revenue and are directly related to the use of streets. If measure 20-252 passes, anyone purchasing fuel in Springfield would pay the additional fuel tax. This includes residents, visitors and those traveling through the area who fill up at a gas station within Springfield city limits.

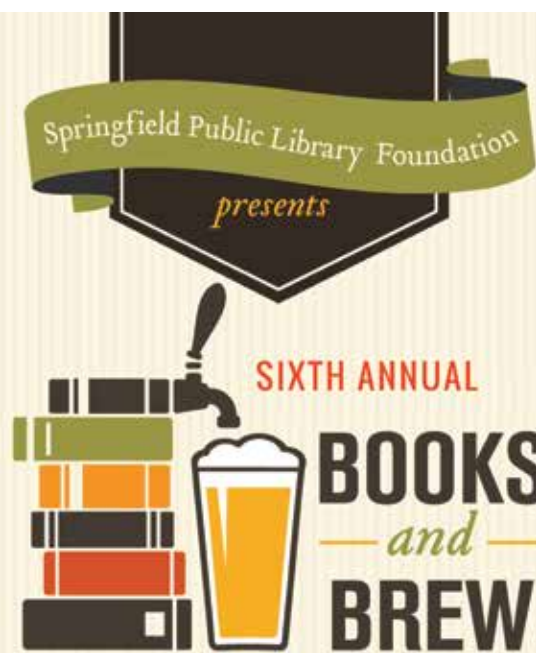
If passed, the 3 cents per gallon increase to the local fuel tax rate (for a total tax of 6 cents per gallon) would start no earlier than January 2017. The state of Oregon collects fuel taxes and there would be no new administrative cost. Additional information about the proposed local fuel tax increase, including the list of backlog street preservation and repair projects and an interactive map, is available at springfield-or.gov under the Proposed Fuel Tax Increase link.



19th St. and Marcola Road



Thurston Road



JANUARY 28, 2017 at 6:30pm
A Fundraiser for Springfield Public Library

Location
SPRINGFIELD PUBLIC LIBRARY
225 FIFTH STREET, SPRINGFIELD, OR 97477

Contact Information
Mary Bridget Smith • 541-726-9621 • info@foundation.wheremindsgrow.org
Learn more about the Springfield Public Library Foundation at
foundation.wheremindsgrow.org

Marijuana Tax

Continued from page 1

2017, and giving Oregon cities the right to impose a sales tax of up to 3 percent on the sale of recreational marijuana and marijuana-infused products by OLCC-licensed retail outlets, if such tax is approved by the voters in a general election. This tax revenue, if approved, would go into the general fund, which pays for a variety of services throughout the city. These taxes apply only to recreational marijuana and not to medical marijuana, which is sold in dispensaries licensed by the Oregon Health Authority.

It is unknown how much money would be generated by a local marijuana tax, as the tax is dependent on the number of licensed retail outlets in Springfield, the price of the marijuana sold and the volume of sales.

Result of a "NO" vote

If this measure does not pass, Springfield will be unable to impose a tax on the sale of recreational marijuana and recreational marijuana-infused products at OLCC-licensed retail outlets in the city at this time.

Oct. 18: Voter registration deadline

Oct. 20: Ballots mailed; official drop sites open

Nov. 8: Election Day

Note: This tax applies only to recreational marijuana and marijuana-infused products. Medical marijuana is NOT affected.

Customer Appreciation Week Is Here!

SPRINGFIELD UTILITY BOARD | Each fall, Springfield Utility Board offers thanks to its customer-owners for the support we receive all year long. At SUB, that means treating the community to free lattes and other coffee drinks, and treating our residential ratepayers to free energy-efficient lighting.

This year, while supplies last, SUB residential customers can receive one **free LED light bulb** per account when they visit SUB's Boardroom during Customer Appreciation Week. The fun happens Oct. 10 - 15 from 8:30 a.m. to 1:30 p.m. during the week, and 9 a.m. to noon on Saturday.

Everyone is welcome to coffee, but LEDs are limited to SUB residential customers with proof of account. (No businesses or landlords please.) Don't know much about the benefits of LEDs? Check out the enlightening information on page 6.

SUB's barista for the week is Café Mam, so don't miss picking up your free coffee, espresso drink or cocoa. Café Mam's delicious, organic, fair-trade espresso is shade-grown and eclipsed by only their friendly service. Come on down and see for yourself.

As you sip your coffee and admire your new light bulb, you might consider signing up for an online account for 24-hour access to your information, including past bill statements, email reminders, paperless billing and more.

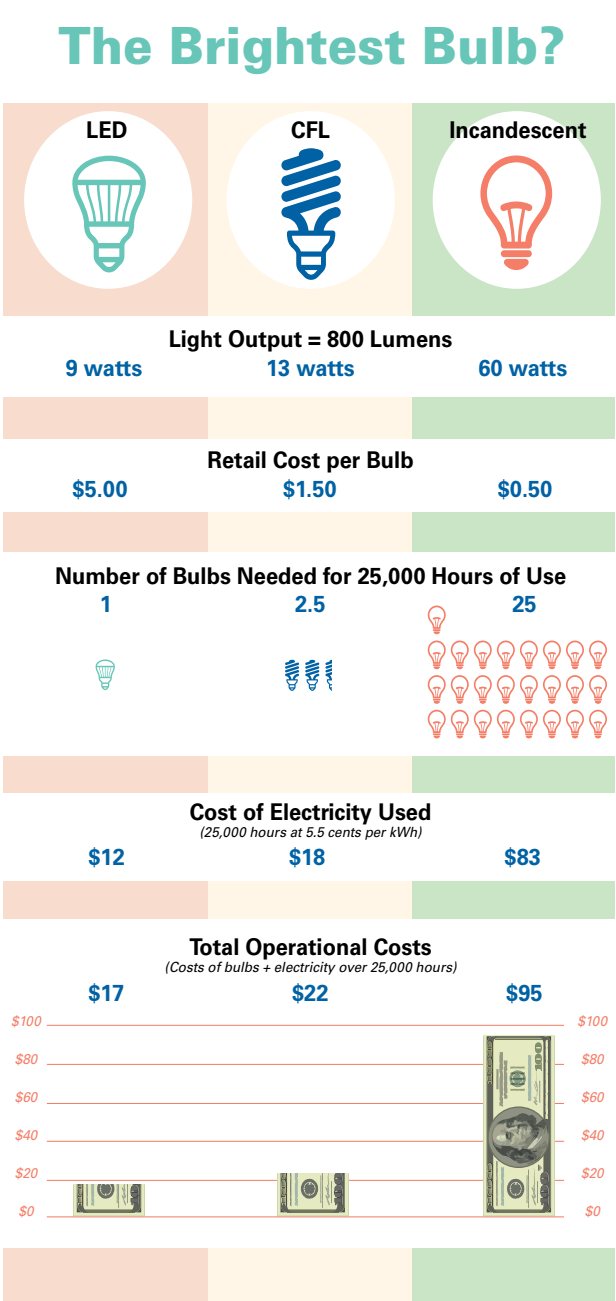
SUB staff will be on-hand to assist you with the process (it's easy and quick!) and by signing up, you'll automatically be entered into a drawing for one of 16 shopping sprees at local businesses, **including a chance at a \$250 shopping spree at Jerry's Home Improvement Center.** That will buy a lot of LEDs!

Join us, and give SUB a chance to say, "thanks a latte" for letting us serve you this year.

SUB's Customer Appreciation Week
Oct. 10 -15

8:30 a.m.– 1:30 p.m., Mon. – Fri.
9 a.m. – noon, Sat.

Across from SUB's main office (250 A St.)



New Memorial Plaza at Willamalane Park to Honor Veterans

CITY OF SPRINGFIELD | Springfield has a long tradition of supporting our veterans through city-related events such as hosting and sponsoring the annual Lane County Veterans Day Parade or hosting the traveling Vietnam Wall Memorial. Through the efforts of private citizens and businesses, the community of Springfield honors those who have served. We still want to do more, which is why the community will see three U.S. veteran-related projects over the next couple of years.

Veterans Memorial Plaza: Working through a partnership between the city of Springfield and Willamalane, plans have been completed to develop a Veterans Memorial Plaza, located within Willamalane Park at Mohawk Boulevard and I Street. In addition to providing space for future military memorials, the plaza will offer an area for reflection, assembly and events. The plaza will be ADA accessible and take advantage of the beautifully maintained park to provide a place to honor those who have served our country.

Vietnam Memorial: The current site includes a small plaque dedicated to Springfield-area veterans who lost their lives in Vietnam. Working with local Vietnam veterans groups, the city and Willamalane are helping to include a new Vietnam Memorial at the site. It will be the first memorial installed in

the Veterans Memorial Plaza – with a planned November unveiling. Local veterans are taking the lead on the look of the new memorial design.

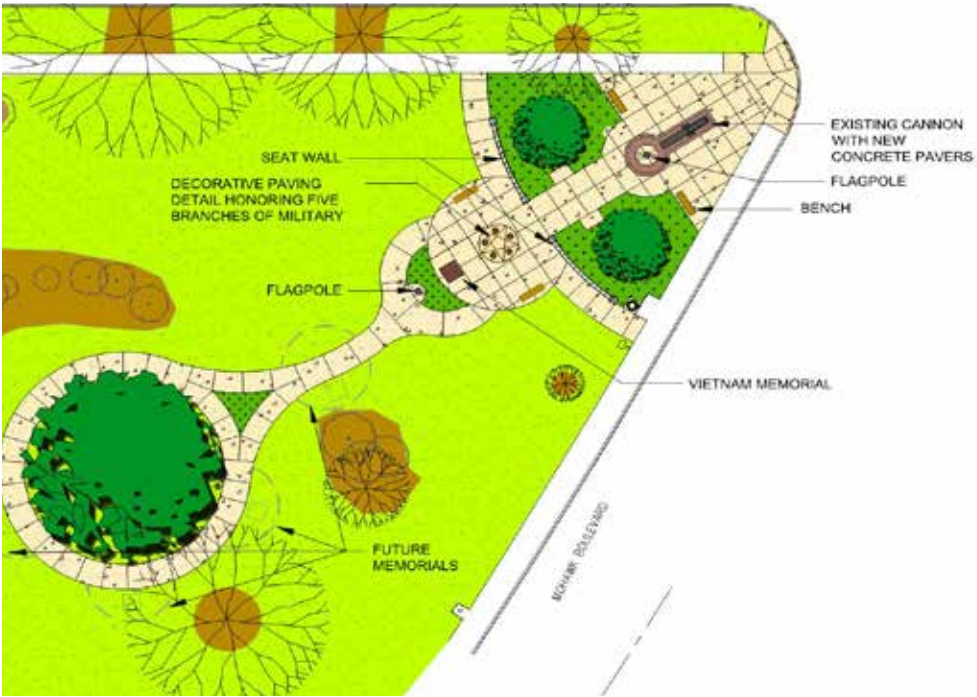
Women in the Military: Another exciting piece of this development is the inclusion of a sculpture to honor the service of women in the military. Throughout the United States, there are very few memorials focused on the sacrifices of women. The goal of this project is to produce a high-quality sculpture that celebrates the service of women in the U.S. military. We plan to recognize the five military branches and dedicate the work to the women who served or gave their lives in service of our country.



Early draft of the Vietnam Veterans Memorial.



Members of the city's Women Veterans Committee attend a "Springfield" Emeralds game during Military Appreciation Night, sponsored by Springfield.



The site plan for the Veterans Memorial Plaza.

Willamalane Superintendent Bob Keefer Retires after a Successful 16 Years



Willamalane's Superintendent Bob Keefer retires.

WILLAMALANE PARK AND RECREATION DISTRICT | October marks a major transition for Willamalane as long-time leader Bob Keefer retires and new superintendent Vincent Martorello takes the reins. Keefer has led the district since 2000, presiding over a long list of developments, from the construction of the Willamalane skatepark to a new sports complex at Willamalane Center. Most recently, Keefer drove the acquisition of 645 acres of natural area in the Thurston Hills — a purchase that effectively doubled public green space in the city.

Keefer started his career as a lowly intern at Willamalane in 1978. "I never imagined when I completed my college internship at Willamalane that I would be leading this organization during my final 16 years in the profession," Keefer said.

Prior to leading Willamalane, he served as Lane County Parks Division Manager for 10 years. Keefer has been actively involved with the Springfield Renaissance Development Corporation, Springfield Downtown

Advisory Committee, Twin Rivers Rotary Club of Springfield and Springfield Chamber of Commerce and is a founding member and director of the Springfield City Club. He is also the current board chairman of the Wildish Community Theater in downtown Springfield.

Willamalane board member Lee Beyer says Keefer has an uncanny ability to listen to the public and build trust in the community. "Bob is probably one of the best public administrators I've worked with, and I've worked with quite a few," said Beyer. "Through his leadership, passion and integrity, he has overseen tremendous growth of the district's resources and amenities."

Keefer, 60, plans to spend more time with his wife, Christi, and family. He said he is grateful to the community for the support it has shown the district. "Thank you, Springfield, for allowing me to be involved in such a wonderful community and to lead the very best park and recreation agency in the state. Be proud, Springfield. Our city is a great place to live, work and play."

PROUD MOMENTS

Willamalane Superintendent Bob Keefer retires Oct. 21 after 16 years as head of the agency. Some highlights of his administration:

Willamalane opened a **skatepark** in 2003 at Willamalane Park, christened by Tony Hawk himself.

Willamalane constructed the first artificial turf sports field in Springfield in 2004. Three more fields were built in following years at **Les Schwab Sports Park at Willamalane Center**.

Willamalane built a community center adjacent to the former Regional Sports Center in 2006. Willamalane purchased the 97,000-square-foot building and renamed it **Willamalane Center for Sports and Recreation**.

Citizens passed a **\$20 million bond measure** in 2012 to expand parks and trails and preserve natural area.

Willamalane secured more than **\$8 million in grant funds** for parks under Keefer, including \$5 million in federal funding for the Middle Fork Path.

Keefer received the Springfield Chamber of Commerce **First Citizen award** in 2012, and the city's Spirit of Springfield award in 2016, among others.

Willamalane was named a finalist for the National Recreation and Park Association's **Gold Medal Award** in 2014 and again in 2016.



Have you seen this Springfield PROUD mural? When you see it at an event near you, take a selfie with the mural in the background and post it online with the hashtag #SpringfieldProud.

CITY OF SPRINGFIELD | Are you proud of Springfield? We are! Citizens were asked to share their Springfield pride at August's Tap & Taste event downtown. Here's what a few of you said:

- Nice family community. Lived here for 30+ years!
- Our best friends are here.
- We have the best children's library!
- The art scene is rich!
- Small community feel with a big town personality.
- All the river biking paths

Willamalane Names New Superintendent

WILLAMALANE PARK AND RECREATION DISTRICT The Willamalane Board of Directors has selected Vincent Martorello as its next superintendent. Martorello, who currently serves as Willamalane's planning and facilities operations director, succeeds Bob Keefer, who retires this month.

Board President Greg James said Martorello's proven track record and leadership skills were key qualities board members were looking for. The choice of Martorello, who was one of five superintendent candidates from inside and outside the agency, also means a smooth transition for the 72-year-old district. "We know Vincent will provide stable leadership for years to come," James said.

Since starting three years ago as Willamalane's Planning and Development Manager, Martorello, 49, has overseen the planning and construction of a number of recent projects, many stemming from the \$20 million bond measure voters passed in 2012.

Most of those projects, including the acquisition of natural areas and new or improved parks, playgrounds and trails, have been completed or are underway.

Prior to Willamalane, Martorello served as the director of facilities at Oregon State University. In that position, he was responsible for the managing, planning, construction and maintenance of OSU's buildings and grounds. As superintendent, Martorello will oversee a \$12 million operating budget, 158 full-time employees, five facilities, 45 parks, 25 playgrounds, 25 miles of hiking and biking trails, 1,500 acres of natural area and more than 500 recreation programs and classes. Martorello will officially start his new job on Oct. 22, following Keefer's last day at the helm. In the meantime, Keefer and Martorello will work closely together to ensure a smooth transition.



Vincent Martorello, Willamalane's new Superintendent.

Springfield Public Schools Staff Kick Off School Year with Address from Superintendent

SPRINGFIELD PUBLIC SCHOOLS | Superintendent Sue Rieke-Smith addressed a gymnasium full of staff and community members Sept. 6, kicking off another exciting school year.

Attendees were welcomed to the event by the spunky pep of the Thurston High School cheer team led by Thurston High’s Robin Erickson and James Underwood.

Following the presentation of the colors by the Willamette Leadership Academy and the singing of the national anthem by Springfield High School’s own Samantha Lopez, Rieke-Smith took the stage to outline the state of the district.

In a presentation that began with a photomontage of students and staff titled “Delivering Success,” Rieke-Smith shared all of the ways she was proud of the work and dedication of the staff across the system. Highlighting collaborative work as “the SPS way,” Rieke-Smith noted that when a challenge is before

them Springfield Public School staff pull together and develop effective solutions focused on the greatest outcome for students.

Rieke-Smith went on to share the impact of last year’s full-day kindergarten on student achievement, and through an amusing video of a Formula One pit stop, she encouraged staff to be “poised and ready” to build upon those successes. Rieke-Smith also underscored the necessity of remaining committed to “non-negotiable values” of equity in outcome for all students. Rieke-Smith noted that all of the district’s work should continue to be done through a lens of equity for all our students, emphasizing that we will “promote an inclusive culture that draws on the assets of our students, staff, families and community members.”

Wrapping up the event, Rieke-Smith noted that ultimately, the staff and the students SPS serves are at the core of all of our work. “Each one of you is a light in our students’ lives and for that I thank you. Just like those glow sticks in your hands, your dedication shines through to our students, and just like those glow sticks, sometimes a little break is what helps us shine brightest,” Rieke-Smith said as she concluded to applause and a darkened gym filled with staff waving glow sticks.

Following the address, staff from across the district gathered for lunch before welcoming students back to classrooms for the start of the 2016-17 school year.



District Nurse JoAnn Broh shares a laugh with Lead Inventory Manager Tim Stephens.



Nutrition Services Coordinator Gary Cole and Thurston High staff served up a delicious lunch.



The Thurston High Cheer Squad warmed up the crowd.

Spotlight Shines on LEDs as Lighting Season Draws Near



SPRINGFIELD UTILITY BOARD | With shorter days coming, our homes’ lighting will be turned on earlier and kept on longer. That means you can’t afford to stay in the dark about the newest generation of energy-efficient lighting – LEDs.

LEDs, or light emitting diodes, have finally come of age and can be used in most fixtures in your home. While they cost more to purchase than traditional incandescent light bulbs, they have an impressive lifespan, are very inexpensive to operate and produce the same quality and color of light that customers expect from incandescents (such as warm white, soft white, bright white).

When shopping for LEDs, you’ll want to have some information in hand so you know what to expect at the store. Let’s take a look:

LEDs cost more upfront but save you money over time. Like a lot of investments in energy efficiency,

customers pay more upfront and then recoup their cost, plus more, over time. Right now, many LEDs retail for about \$5. That’s compared to around 50 cents for a traditional light bulb. But take a look at the infographic on page 4. Used correctly, that LED will last 20 years and cost next to nothing to operate.

LEDs need air circulation. LEDs last a long time because of their solid-state construction. Using a generic LED in an enclosed or semi-enclosed light fixture will trap heat and burn out the electronics quicker than the promised 25,000-hour lifespan. So, if you have such a fixture, look for LEDs approved for recessed or enclosed applications.

If you want to use an LED with a dimmer switch, check the label. Because of their circuitry, LEDs are not always compatible with traditional dimming switches. In some cases, the switch must be replaced. Other times, you’ll pay a little more for a compatible LED.

Brightness is measured in lumens, not watts. How bright is that 60-watt bulb in your living room lamp? If you’re like most folks, you probably said...60 watts. Alas, the real answer is 800 lumens. That’s because the brightness of every light bulb, including that trusty incandescent, is measured in lumens, not watts. Always has been.

Wattage is the amount of electricity a bulb uses, and since incandescent bulbs were the only game in town for something like a hundred years, we all became used to equating wattage with brightness. That got turned on its head with the new generation

of energy-efficient bulbs, which produce the same amount of brightness using far less wattage.

Most LED packaging provides an equivalency rating to help customers figure out how bright an LED is compared to the incandescent bulbs they’re used to, but not all. We offer this chart to help you shop:

LED	Incandescent	Lumens
25-28 watts	150 watts	= 2600 lumens
16-20 watts	100 watts	= 1600 lumens
9-13 watts	75 watts	= 1100 lumens
8-12 watts	60 watts	= 800 lumens
6-9 watts	40 watts	= 450 lumens





The new playground at Meadow Park features rubberized tile surfacing, tons of fun play structures and even musical instruments.

New Playground Delights Kids at Meadow Park

WILLAMALANE PARK AND RECREATION DISTRICT | The squeals of laughing children aren't the only sounds emanating from the new playground at Meadow Park. Outdoor musical instruments add to the sensory play experience at the park, which also received a new paved plaza, benches and bike racks. The picnic

shelter was replaced, and the restroom building received new fixtures, doors and paint.

The new play equipment is provided in separate areas for children ages 2-5 and 5-12. The project was funded in part by a Local Government Grant Program administered by Oregon Parks and Recreation Department.

The rest was budgeted as part of Willamalane's operating expenses.

Meadow Park, located at 851 Mill St., received improvements to the baseball field area last October. The Charlie Smathers Playground at Island Park also opened in July. The refurbished playground includes rubberized tile surfacing and a sand play area.

New Path Nears Completion; Sports Park Gets Upgrade

WILLAMALANE PARK AND RECREATION DISTRICT | The rush of construction activity continues at parks around Springfield as Willamalane wraps up a busy season of new park projects and improvements. Much of the work has been funded by a \$20 million bond measure voters approved in 2012 to preserve land, build new parks and conserve energy. Keep an eye out for developments in your neighborhood!

Mill Race Path

Mill Race Path, a 3-mile walking and bicycling path, is on schedule to be completed in early November. It will stretch along the historic Springfield Mill Race, with access to Dorris Ranch and Clearwater Park.

The new path, constructed in partnership with the city of Springfield, will connect the downtown area to the 4-mile Middle Fork Path, expanding opportunities for walking, cycling, skating and wildlife watching. The main trailhead, at the eastern terminus of South B Street, will include parking, bike racks, restrooms and a plaza with a scenic overlook. The second trailhead will be located at 32nd Street and Jasper Road.

Island Park

Construction in Island Park was completed in late July. The playground received rubberized tile surfacing, similar to the playgrounds at Quartz and Meadow parks. A sand play area, new seating, additional landscaping and walkways were also installed.

Les Schwab Sports Park

Willamalane is building a new parking lot, entry plaza, flag court, walking path and other park improvements at the Les Schwab Sports Park at Willamalane Center. Most of the work



will be at the far south end of the park and at the current entry near the restrooms.

Thurston Hills Natural Area

Thurston Hills Natural Area is undergoing restoration, focused on controlling invasive plants. Planners are also designing the trailhead and mapping locations of future trails. The first trail will begin at the base of the Thurston Hills near the intersection of Highway 126 and 75th Street. Construction on both the trailhead and the trail are expected to occur next spring.

...And Another New Park!

Finally, Willamalane is in the planning and design phases of a new park at 18th and H streets. This quarter-acre park will have several small playground elements, pathways and seating. Construction is expected this fall or next spring.



Park Watch Encourages Visitors to Report Problems in Parks

WILLAMALANE PARK AND RECREATION DISTRICT

Willamalane is introducing a new Park Watch program that will empower the community to help us keep our parks fun places to play.

"We take pride in the safety of our parks," says Eric Wold, assistant superintendent of parks and facilities at Willamalane. "We very rarely see crime occur. Still, in some of our larger parks we experience nuisance behavior, graffiti or other park user conflicts."

That's why we're asking for your help. If you see violations of park rules, including off-leash dogs, graffiti, vandalism, improper trail usage, abandoned vehicles, unauthorized camping and anything else that might compromise health and safety, we encourage you to call us and let us fix the problem.

To report suspicious activities or maintenance needs, please call 541-736-4104, or go online at willamalane.org/park-watch and submit your report on the form. Include as many details as possible, such as exact location. Park visitors are also welcome to use social media to report issues. Connect with Willamalane Park and Recreation District on Facebook, Twitter and Instagram. (See contact information for each agency on page 2.)

Springfield Winter Events Calendar

OCTOBER



The Great Costume Swap

Costume drop-off: Oct. 3-7, 8 a.m.-6 p.m.

Costume exchange: Saturday,
Oct. 8, 10:30-11:30 a.m.

Willamalane Center

541-736-4544 • willamalane.org

Free. All ages costume swap. Drop your gently used costumes at Willamalane Center and receive a “swap token” to redeem for a new-to-you costume on Oct. 8. Sizes and styles vary.

SpringFilm: ‘One Flew Over the Cuckoo’s Nest’

Oct. 6, 6:30-9 p.m.

Wildish Community Theater

Free showing of the “Made in Oregon” film presented by Plank Town.

Downtown Springfield Second Friday Art Walk

Oct. 7, 5-8 p.m. Free.

Springfield Utility Board Customer Appreciation Week

Oct. 10-15, Mon-Fri., 8:30 a.m. - 1:30 p.m.

Sat., 9 a.m. - Noon

SUB’s main office, 250 A St.

541-746-8451 • subutil.com

Drama in Dark and Light: Paintings by Cork Larsen

Friday, Oct. 14, 5-7 p.m.

Island Park Gallery Reception

541-736-4544 • willamalane.org

Free. Meet the artist while enjoying hors d’oeuvres and wine.

ROCKtoberfest

Friday, Oct. 14, 6-9 p.m.

Willamalane Center

541-736-4544 • willamalane.org

Free. Ages 21+. Grab a group of friends and try climbing! After your summit, quench that thirst with a complimentary draft from a beer garden in back.

Free Family Climb

Sunday, Oct. 16, 1-4 p.m.

Willamalane Center

541-736-4544 • willamalane.org

All ages. Bring the family to the climbing wall and challenge each other — the more who climb, the greater chances of winning one of our fantastic prizes.

UKetoberfest

Oct. 14-16

Willamalane Adult Activity Center

uketoberfest.com or willamalane.org

Celebrate ukuleles with some of the best artists and instructors in the Northwest. Classes for all levels; register at uketoberfest.com. Fees range from \$40 to \$150.

Haunted Hayride

Oct. 24-26

Dorris Ranch

\$7.50 in-district/\$9 out-of-district

Ride through the “haunted” trails of Dorris Ranch. Tickets go quickly! Call 541-736-4544.

City Hall Trick or Treat and Magic Show

Oct. 31, 3:30-5 p.m.

One of Springfield’s most popular events returns. Join us for a safe, dry and fun place to trick or treat!

NOVEMBER

McKenzie Cider & Craft Beer Festival

Nov. 4, 5-10:30 p.m.

Nov. 5, Noon-10:30 p.m.

Willamalane Center

\$12 in advance/\$15 at the door

Springfield Rotary presents an event featuring live music, great food and craft beverages. Saturday afternoon includes kid-friendly activities.

SpringFilm: ‘The Goonies’

Nov. 10, 6:30-9 p.m.

Wildish Community Theater

Free showing of the “Made in Oregon” film presented by Plank Town.



Turkey Stuffer 5K

Downtown Springfield Second Friday Art Walk

Nov. 11, 5-8 p.m. • Free.

Turkey Stuffer 5K

Nov. 24, 8:30 a.m.

Lively Park

541-736-4544 • willamalane.org

Gather together for this active take on Thanksgiving tradition benefitting Willamalane’s free Summer Playground Program.

Adults: \$30 for the run and a long-sleeved tech shirt; \$15 for the run only

Youths up to age 14: Free for the run only; \$15 with a long-sleeved cotton shirt

DECEMBER



Springfield Christmas Parade

Saturday, Dec. 3, 1 p.m.

The “oldest and coldest” Christmas Parade is rolling back through town, and it’s time to turn out and watch for a glimpse of Santa. springfieldchristmasparade.org



Holiday Marketplace

Dec. 6 and 7, 9 a.m.-6 p.m.

Adult Activity Center

Free admission. Shop an array of handcrafted gifts and homemade delicacies. You’ll find one-of-a-kind wooden creations, jewelry, candles, fiber arts and more.

SpringFilm: ‘Animal House’

Dec. 8, 6:30-9 p.m.

Wildish Community Theater

Free showing of the “Made in Oregon” film presented by Plank Town.

Downtown Springfield Second Friday Art Walk

Dec. 9, 5-8 p.m. • Free.

Breakfast with Santa

Dec. 10, 9 a.m.-Noon

Adult Activity Center

541-912-8773 • springfieldcpaaa.org

The Springfield Citizen Police Academy Alumni Association presents a pancake breakfast and fun-filled morning.



This newsletter is a twice-yearly publication of TEAM Springfield, a unique collaboration of the city’s four public agencies. Together, we share ideas, energy and resources to deliver projects that benefit our community. For more information, visit www.teamspringfield.org.