

# TEAM Springfield

News From Your  
Springfield Public Agencies

Willamalane Park and Recreation District ★ Springfield Public Schools ★ City of Springfield ★ Springfield Utility Board

## Dorris Ranch Campaign Urges: Fight the Blight



Spirings the Squirrel, Willamalane's mascot, wants you to FIGHT the BLIGHT.

### WILLAMALANE PARK AND RECREATION DISTRICT |

Willamalane Park and Recreation District is raising funds to replant trees affected by the spread of a fungal infection in the orchards where Oregon's hazelnut industry was born. George Dorris started the nation's first commercial filbert farm on South Second Street in 1903. The trees flourished in fertile Willamette Valley soils, and Oregon now produces 99 percent of the nation's crop.

Eastern filbert blight creates raised sores on limbs, and trees die within eight years of infection. Most of the trees planted at Dorris Ranch, now a National Historic Preservation Site and popular public park,

were of the 'Barcelona' variety—a variety highly susceptible to a fungal infection called eastern filbert blight. The blight infects and kills trees over a period of years.

Willamalane, along with orchardists throughout Oregon, has fought to counter the blight with selective pruning and other methods. But the best way to battle the infections, according to experts at Oregon State University, is to replant orchards with blight-resistant cultivars. The Oregon State Historic Preservation office has approved a plan to remove trees from affected Dorris Ranch orchards and replant with new varieties, such as 'Jefferson,' which shares many of the same qualities of 'Barcelona' but is resistant to eastern filbert blight.

Willamalane plans to replace the orchards in stages over the next 18 years, at a total cost of \$300,000 to \$400,000. Some of the funding will come from revenues derived from the filbert harvest.

In addition, Willamalane is asking the public for help in a campaign called "Fight the Blight."

"As stewards of Dorris Ranch, we need to do everything we can to protect and preserve the historic elements and commercial operation of the orchard," said Michael Wargo, assistant superintendent for recreation, strategic planning and resource development. "You can help Willamalane preserve Dorris Ranch for future generations by contributing to our Fight the Blight campaign. As the new trees grow and produce filberts, so will the community's investment in this Springfield icon."

Contributors to the campaign may sponsor a single tree (\$25), a group of five trees (\$100), 30 trees (\$500), an acre (\$2,500) or an entire orchard. Eleven separate orchards are to be replanted at Dorris Ranch. Money raised from this campaign will go into a dedicated fund for Dorris Ranch. Those interested in more information or in making a donation may contact Kate Reid, resource development coordinator, at 541-736-4520 or kater@willamalane.org.

This spring, crews will clear 1,237 trees from the Cannery and Walnut orchards. Approximately 1,400 to 1,600 new trees will be planted in the fall, including 'Jefferson' and the pollinating varieties 'Yamhill' and 'Eta.' Willamalane will nurse the young trees over the next three years, and then will prepare for another stage of removal and replanting in adjacent orchards as eastern filbert blight infection spreads.

While most of the filbert trees at Dorris Ranch will be replaced over the next 18 years, Willamalane plans to preserve four acres of historic 'Barcelona' trees in the Road Orchard, near the barn, where George Dorris' legacy will live on. Maintenance in the Road Orchard will include the use of anti-fungal sprays and selective removal of branches from blight-infested trees.



Raised sores appear on limbs infected by eastern filbert blight, and trees die within eight years.

### What's Inside...

Springfield Annual Spring Clean Up.....	2
Green Spring Cleaning.....	3
Bright Future for Springfield.....	4
Cross-Laminated Timber in Glenwood.....	5
Summer Event Calendar.....	6
Parks Playground Program.....	8

*Together, we share ideas, energy and resources to deliver projects that benefit our community.*

Residential Customer

Springfield Public Schools  
525 Mill Street  
Springfield, OR 97477

NON-PROFIT ORG.  
U.S. POSTAGE  
PAID  
EUGENE, OR  
PERMIT NO. 625  
ECRWSS

## Meet Springfield's ACE Award winners!

**SPRINGFIELD PUBLIC SCHOOLS** | Each year, the Springfield, Eugene and Bethel chambers of commerce collaborate to produce ACE, or A Champion in Education, awards to honor outstanding supporters of our schools. Each school district selected one administrator, one teacher, one classified employee and one volunteer who each received a check for \$1,000 for their school and were honored at a special ceremony at the Hult Center on April 19.

### ACE Classified: Tim Ranger, Library Educational Assistant, Mt. Vernon Elementary School

Tim, who was also named classified employee of the year by the Oregon School Employees Association in March, has been with the district for eight years, the last three as Mt. Vernon's librarian. Tim's colleagues praise his efforts above and beyond his part-time salary, his leadership of the school's Oregon Battle of the Books and in instructional technology, recruiting parent volunteers and "Red Jacket" student volunteers to encourage students who love reading and spending time at the library, and parents who are more actively involved in their children's education. Said his principal, "Tim has transformed our library and created a vibrant and rich space with books, technology, drama, teamwork, student leadership and more, all to support and promote the love of reading."

### ACE Certified: Karen Babcock, Librarian/Media Specialist, Ridgeview Elementary School

Ridgeview's librarian/media specialist for six years, Karen previously worked at both Riverbend and Page elementary schools. Karen is well known for going "above and beyond" to support students and make the school and district a better place. She is highly involved in district and school activities and committees, encouraging student reading through the Read-A-Thon and the highly successful



Springfield's 2016 ACE Award winners are, from left, Tim Ranger, Karen Babcock, Supt. Sue Rieke-Smith, Kevin Wright and Frank Koch.

Oregon Battle of the Books program, overseeing the school's talented and gifted program and Destination Imagination teams and managing the computer lab. Said her principal, "Karen's efforts at the school and district level are bringing the role of media specialist to the forefront of curriculum and staffing discussions to support education."

### ACE Administrator: Kevin Wright, Principal, Hamlin Middle School

Kevin is in his eighth year with the school district. He has been principal at Hamlin for three years, having previously served as assistant principal at Thurston and Briggs middle schools. At Hamlin, Kevin has played a key role in the school design committee as construction begins on the new bond-funded Hamlin Middle School. Kevin's colleagues say he is a champion for his students, and fosters a spirit of collaboration that empowers and inspires staff to be their best. Kevin's willingness to embrace new ideas have improved school culture and inspired healthy work habits for students around effort, grit and growth. Said a colleague, "Kevin always puts the needs of others first, making everyone he comes in contact with feel valued and appreciated."

### ACE Volunteer: Frank Koch, Thurston High School

Frank, a consultant and former Chevron executive, pours his knowledge, energy and time into Thurston High. He works with incoming freshmen in the Summer Bridge program and is co-advisor of the Decision Understanding Club, teaching students effective decision-making skills they can use for the rest of their lives. He also helps lead college and career readiness workshops at the school. Said a staff member, "Frank's humor, life experience and interesting stories have made Frank the class favorite. His work will improve the lives of our young people by empowering them with effective decision skills."



**What is TEAM Springfield?**

"We at SPS are in the business of shaping Springfield's future citizens. The unique TEAM Springfield collaboration of agencies provides us with an unparalleled network of support and opportunities for our students."

—Sue Rieke-Smith, Ed.D.,  
Springfield Public Schools  
Superintendent

## City of Springfield Offers 28th Annual Spring Clean Up

**CITY OF SPRINGFIELD** | With spring officially here consider taking advantage of the city of Springfield's free annual Spring Clean Up event available to residents within the city limits. Spring is a great time to consider what you could get rid of around the house and yard to help beautify your neighborhood. Do you have an old freezer or refrigerator that no longer runs? Scrap lumber or metal that you don't need? Brush left from trimming trees and shrubs? These are just some of the items that can be recycled during this free community event.

City leaders are committed to using Spring Clean Up as a way to say 'thank you' to residents by giving back at this annual event. It is an opportunity to recycle large items and hard-to-recycle materials in one



Recycle large and hard-to-recycle items at Spring Clean Up.

convenient place. Spring Clean Up is truly a community event which thousands of enthusiastic residents have taken advantage of throughout the years.

Please note that this free event is exclusively for city of Springfield residents within city limits. Proof of residency will be required. No businesses, please.

This community event could not be possible without support by many local businesses and non-profits. This year's event supporters are Sanipac, Lane County Waste Management, St. Vincent de Paul, Lane Forest Products, Next Step Recycling, Cascade Metal Recycling, Habitat for Humanity ReStore and Lane County Master Recycling Program.

### History of Springfield's Spring Clean Up

What started out as a brush collection program has evolved into a recycling and reuse event. Here's a brief timeline of how the program grew:

- 1983 – Started as brush collection program facilitated by the Promote Unique Springfield Happenings facilities committee to promote a Springfest Clean Up in the downtown and Mill Street area. The event took place as a partnership between the city of Springfield, Neighborhood Watch volunteers and residents in the area.
- 1988 – City of Springfield took the lead and renamed it "Spruce Up Springfield" to help reduce nuisance code violations by allowing residents to clean up their yards and dispose of debris in one convenient location free of charge.
- 1993 – Event was given its current name, Spring Clean Up, and additional items started being accepted.
- 2003 – The event expanded by offering recycling and reuse collection services free of charge.

**Saturday, May 14, 2016**

**from 8 AM to 4 PM**

**1600 S. B Street in Springfield**

For more information about Spring Clean Up, visit [springfield-or.gov/dpw/SpringCleanup.htm](http://springfield-or.gov/dpw/SpringCleanup.htm) or call 541-726-3637. You can also email your questions to [springcleanup@springfield-or.gov](mailto:springcleanup@springfield-or.gov)

## Keep the 'Green' While You Spring Clean

**SPRINGFIELD UTILITY BOARD** | With our beautiful spring weather comes a desire to open windows, air out the house and peer into the recesses of our cabinets and closets to see what's piled up over the dark winter months. But without a little planning, a clean house can make for a toxic environment. Springfield Utility Board offers these tips to keep the earth—and our drinking water—sparkling as you get your house in order!

**Cleaning out your medicine cabinet?** **DON'T FLUSH YOUR OLD MEDICATIONS!** Toilet and sink water flows to the water treatment plant and eventually our local rivers. Protect water quality by gathering your expired or unwanted medications and taking them to a MedReturn drop box instead. There's one at the Springfield Justice Center at 344 A Street in downtown Springfield and two in Eugene, one at the Police Department (300 Country Club Road) and one at the Sheriff's Office (125 E. 8th Ave.) The box accepts over-the-counter and prescription medications, vitamins and nutritional supplements, samples and pet meds. Visit [mwmcpartners.org/drug\\_take\\_back](http://mwmcpartners.org/drug_take_back) for exclusions, other locations and additional information.

**Doing some light cleaning around the house?** Try making your own cleansers out of natural ingredients like lemon, vinegar and baking soda. Check out the infographic, at right, for ideas, or go to SUB's website at [subutil.com](http://subutil.com) under our water quality tab for even more ways to go green.

**Making room in the garage?** **NEVER** dump chemicals hazardous to the environment down drains. Instead, gather up items that can pollute groundwater and streams like old motor oil, paint, gasoline or pesticides and take them to the Glenwood Central Receiving Station at 3100 E. 17th Ave. There is no charge to drop off up to 35 gallons from households (no businesses, please). The fine print: They accept household hazardous waste on Thursday and Saturday mornings only, and you'll need an appointment, which you can make by calling 541-682-4120.

## Car Washing Right for the Fish

**CITY OF SPRINGFIELD** | Whether you're washing a single car or a fleet, take steps to ensure that the dirty water stays out of the storm drain system. Common activities like washing your car really can have an impact on the health of local rivers.

When you wash your car on a paved surface such as a driveway or parking lot, the soapy, grimy water flows into a storm drain and into our waterways without treatment. This means the dirt, soap and oil coming off your car is reaching our rivers where it can be harmful to fish, plants and water quality. If you're washing your personal car, wash it on a lawn or take it to a commercial wash.

Planning a fundraiser? The City of Springfield has Fish-Friendly Car Wash kits available to use for free that help protect local waterways by keeping the soapy, dirty water from entering the storm drain system. Email [WaterResources@springfield-or.gov](mailto:WaterResources@springfield-or.gov) to reserve a kit or visit [www.springfieldstreams.org](http://www.springfieldstreams.org) for more information. Springfield staff will show you how to set up and use the kits before your next car wash or car wash fundraiser. Reserve a kit and do your part to help keep local rivers clean and healthy!



The City of Springfield has free Fish-Friendly Car Wash kits available to use to help protect local waterways by keeping the soapy, dirty water from entering the storm drain system.

# 5 DIY

## Household Cleaners from your Kitchen Cabinet

Springfielders live and work on top of our drinking water supply, which comes primarily from underground aquifers. By using the following recipes – all made from natural ingredients that are easy on our drinking water sources and tough on dirt – you'll not only save money, you'll reduce pollution from chemicals found in many brand-named cleaners. Pick one and give it a try. Once you get started, using these natural cleaners will become second nature!



**GLASS CLEANER**  
Fill a spray bottle with 1 quart water and add 1 tablespoon white vinegar.



**PAINT REMOVER**  
Remove from hands using baby oil or mineral oil, and from paint brushes using hot vinegar.



**SINK AND TOILET CLEANER**  
Mix a paste of either baking soda or borax with water and add a squeeze of lemon juice. For toilets, drop a few vitamin C or denture cleaning tablets into the bowl and let sit over night.



**DRAIN OPENER**  
Pour ¼ cup baking soda down drain. Follow with ½ cup vinegar. Cover with either a cloth or cup so fizzing pressure is forced down through the pipe. When fizzing stops, flush with a few cups boiling water.



**AIR FRESHENER**  
Simmer cinnamon, cloves, or other sweet herbs. Simmer them on a stove, let cool, then spray the "tea" water using a mister.



### What is TEAM Springfield?

"TEAM Springfield is the model of how local governments should work together to do what is best for their community. I am so proud of our joint efforts to make Springfield a great place to live, work and play."

—**Bob Keefer**, Willamalane Park and Recreation District Superintendent

## Progress Paints Bright Picture for Springfield

### WILLAMALANE PARK AND RECREATION DISTRICT

When Jodie Davaz was studying at Oregon State, she pictured herself moving on to bigger things in Portland. Instead, her fiancé, Kenny Wallace, a computer programmer, landed a job in Eugene when they graduated in 2015.

But the couple was looking for a city that wasn't a college town – a place where they could put down roots. Plus, as Beavers, they couldn't bring themselves to live in yellow-and-green Eugene. "Within a week of moving here, I'd fallen in love with Springfield," says Davaz, 22. "It's got this community feel, that, growing up in North Idaho, I didn't have."

Davaz's story is becoming more common. As Springfield's population grows, the city is overcoming negative stereotypes by attracting business, fighting crime, building schools and investing in parkland.

That success is visible in the bustle of a Friday evening in downtown Springfield, where crowds hop between stops on a Second Friday Artwalk; enjoy craft beers at Plank Town Brewing Co., the Growler Underground and the Claim 52 Abbey; shop for local veggies and pick up meals at Sprout Food Hub and take in a show at the beautiful Wildish Community Theater.

Springfield, it turns out, has a lot to brag about. In the past few years, citizens have supported bond measures for parks, schools and public safety. Crime in downtown Springfield, for example, decreased significantly after citizens approved measures to build and staff a new justice center. Just last month, Springfield was named one of the top 25 safest places to live in Oregon. The public safety organization BackgroundChecks.org placed the city at No. 19 on the list, behind West Linn (1), Corvallis (10) and Ashland (18).

### Business Successes

The strides the city has made publicly are matched by the business community.

- When a fire destroyed Swanson Lumber in 2014, mill owners could have closed up shop or relocated. But Swanson Group chose to invest more than \$44.8 million in a new facility that will employ about 190 workers in Springfield.
- At its mill on North 42nd Street, International Paper has embarked on a \$101.6 million upgrade.
- The makeover of the Gateway Mall is nearing completion. The Rouse Corp. is spending \$45 million on The Shoppes at Gateway, which is attracting new retailers and restaurants. Mall anchor Cabela's is expanding as well.
- Springfield is home to two regional hospitals.



When Kenny Wallace and Jodie Davaz moved to Springfield this year, Davaz says their adopted home was "close to everything, but unlike anything else." They plan to wed next year at Dorris Ranch.

PeaceHealth Sacred Heart Medical Center built a new, 1.4 million-square-foot facility in 2008, and McKenzie-Willamette Medical Center is currently undergoing an \$80 million expansion.

- In addition, the city is pursuing redevelopment in Glenwood, where another new hotel is planned next to the Candlewood Suites, which was built in 2014.

### Making Education a Priority

Schools are at the heart of every community, and Springfield supports its schools. Two bond measures since 2006 have resulted in three new schools, major technology upgrades and countless necessary facility renovations. There's more bright education news:

- Springfield encourages literacy. The school district's award-winning Gift of Literacy program, in collaboration with community partners, has given more than 11,000 books to first-graders in the last 10 years.
- Springfield believes in opportunities. Springfield schools have maintained and expanded support for career technical programming across the district to provide more options for career-ready students to move into living wage jobs in manufacturing, trade and tech sectors.
- Springfield appreciates the arts. Our schools understand the value of project-based learning that incorporates art across disciplines, so much so that Springfield Public Schools was awarded part of a \$2.2 million dollar federal grant.

### Parks and Recreation

After the passage of a \$20 million bond measure in 2012, Willamalane Park and Recreation District doubled its green space, and now boasts 45 parks and open spaces totaling 1,500 acres. The district recently acquired 50 acres along the scenic McKenzie River and 700 acres of natural area.

Willamalane facilities are a regional draw. Willamalane Center for Sports and Recreation attracts hundreds of sports tournaments and plays host to the semi-pro Lane United Football Club. Other attractions include a wave pool (Splash! at Lively Park), Willamalane Park Swim Center and an active center for older adults. People come from all over to walk the scenic Middle Fork Path and wander through historic orchards at Dorris Ranch.

### Affordable, Reliable Utilities

Springfield's affordability makes it a great place for families to live and play.

- Springfield citizens pay low water and electric rates. Residents save \$14 million annually compared to those served by other local utilities.
- Springfield's electricity is reliable! Springfield Utility Board, the community's provider, received one of the highest utility reliability ratings possible from the American Public Power Association.
- Springfield protects its water quality. SUB, the community's water utility, is known statewide as a leader and model in protecting drinking water. In fact, Springfield has been designated as a Groundwater Guardian Community for nearly two decades.

The way the city's public agencies work together has also drawn praise. The unique TEAM Springfield partnership of agencies received an Outstanding Community/School Partnership Award from the Oregon Department of Education.

As Mayor Christine Lundberg notes, the city's successes are registering with residents. She says people approach her with comments about how Springfield is succeeding. "People have told me they have moved to Springfield because it is a community that has welcomed them and that they want to be part of this community," she says.

For Davaz and Wallace, that has certainly held true. Davaz took a job at Willamalane, and the couple are planning to wed and buy a house in Springfield. This spring, they're planting their first garden. "There's nowhere I'd rather be," Davaz says.

## What to Watch: MWMC Video Series

**CITY OF SPRINGFIELD** | Have you ever heard of the Metropolitan Wastewater Management Commission? Did you know it is a regional partnership of Springfield, Eugene and Lane County that works to effectively treat used water, or wastewater, in the metro area?

If you answered 'no,' you're not alone. The MWMC has been quietly providing wastewater services for more than 30 years. To help raise awareness about what the MWMC does, how it does it and what everyone can do to help protect local water quality, the MWMC has developed a short video series. You can view the series at [www.youtube.com/c/MWMCPartners](http://www.youtube.com/c/MWMCPartners) or on the MWMC's home page under "News and Events" at [www.mwmcpartners.org](http://www.mwmcpartners.org).

Cleaning water is a big job—as in, 12 billion gallons of wastewater are treated locally each year! Check out the videos to learn more about it and share them with your friends, neighbors, family and coworkers.



### What is TEAM Springfield?



"TEAM Springfield is about hardwiring communication among government agencies and officials into our regular process. Why? It's a way to make sure priorities are aligned so we're pulling in the same direction to benefit Springfield. Some communities may decide that operating in silos works for them, but in Springfield, we've shown that working together produces amazing results."

—Jeff Nelson, General Manager, Springfield Utility Board

## City Uses Cross-Laminated Timber in Glenwood Structure



The city of Springfield Oregon partnered with the University of Oregon and Centre for Advanced Wood Products Design and Manufacturing to explore the use of cross-laminated timber (CLT) in the construction of a parking structure to be located in the Springfield Glenwood Riverfront Redevelopment Area. Over the last several months, the City of Springfield has worked with SRG Partnership, an architecture firm known for design and construction of innovative buildings, to advance the student ideas from multiple CLT garage concepts to a single unique CLT parking garage design.

**CITY OF SPRINGFIELD |** The city of Springfield is designing a cross-laminated timber parking structure as a showcase building in our Glenwood Riverfront Area. Glenwood is a special area where our vision for innovation and sustainability overlaps with characteristics that are uniquely Springfield to create a place of community pride that expands our horizon from what is typical today to what can be accomplished tomorrow.

The city is proud of the values of hardworking entrepreneurs and industry leaders. Following the establishment of our first plywood mill, Springfield has grown to become a timber-manufacturing leader in Lane County, the leading timber county in Oregon. While the economy has evolved over time,

Springfield still boasts a strong hold on the timber industry. The city is committed to partnerships and responsible stewardship of the industry, striving to promote sustainable practices and development that further showcase the opportunities in our community, and advanced wood products like CLT can be the catalyst.

Our community has invested more than a decade of time and effort into Glenwood for redevelopment, particularly along the riverfront. Like the CLT parking structure, Glenwood is intended to be a showcase of what is possible when excellence in planning and economic development are combined with innovation and forward thinking community leaders and industry pioneers. In recognition of the limited and valuable resources in Glenwood, the city adopted policies encouraging structured parking rather than surface parking, thereby generating demand from the development community. Understanding this need, we see enormous opportunity for a truly unique parking structure using the newest wood technology. The Glenwood CLT parking structure is designed to be beautiful yet unpretentious, showcasing without apology the natural beauty of the structural CLT and glued laminated timber (glulam). Our structure will be an open “laboratory” for advanced timber manufacturing.

Over the next three years the city will work with community partners to develop the Glenwood Riverfront to showcase the Oregon timber industry; encourage opportunities for living, working and playing; and provide the region with an exciting and beautiful tourist destination. The city of Springfield is proud to be an advocate and leader for the timber industry, setting the pace by modeling innovative construction.

### What is Cross-Laminated Timber?

Cross-laminated timber is a large-scale, pre-fabricated, solid-engineered wood panel. Lightweight yet very strong, with superior acoustic, fire, seismic and thermal performance, CLT is also fast and easy to install, generating almost no waste on-site.



Mayor Lundberg touring the first CLT building in Portland.

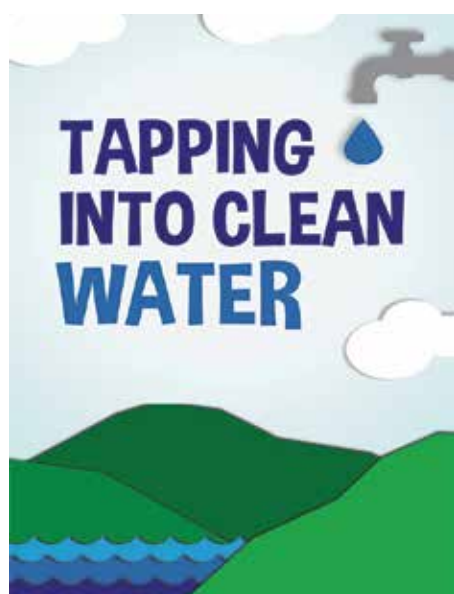
## Tapping into Clean Water

### SPRINGFIELD UTILITY BOARD

Plunge into water science by grabbing the kids and visiting the Science Factory’s newest mini exhibit, “Tapping Into Clean Water.” The exhibition explores drinking water’s journey from its natural source at a river, lake or underground aquifer to the taps in your home.

Play a tilt-table game to help Rory the Raindrop navigate its way through the landscape to the water treatment plant, watching out for pollutants and other hidden hazards along the way. What happens at the treatment plant? Head over to a four-station hands-on exhibit about water filtration and treatment. You’ll see how environmental impurities are removed from drinking water so it’s clean enough to drink. You can even build your own community-wide water system in a cooperative board game with your friends!

Designed for children 8 and older, “Tapping Into Clean Water” will help you and your family view this amazing, limited resource in a whole new way. The exhibit is a local effort funded and created by the water and education professionals at our area’s three local water utilities—SUB, EWEB and Rainbow Water District—as well



as the Science Factory and even some help from our friends at Café Yumm!

“Water flows right past city boundaries,” says Amy Chinitz, SUB’s drinking water source protection coordinator. “That’s why regional coordination is so important. We work cooperatively to make sure our community’s water is clean and that our residents know what harms it—and how to protect it.”

It all starts with education, so bring the kids and learn more about your water system!

# GET GOING THIS SUMMER!

## BUY THE



**\$50**

**Ages 18 and Under**

On sale at LTD, Willamalane Center and Eugene Rec pools

**FREE ENTRY** Restrictions apply

- Amazon Pool
- Camp Putt Adventure Golf Park
- Cascades Raptor Center
- Echo Hollow Pool
- Lane Transit District buses
- River Road Park District Pool
- Science Factory
- Sheldon Pool
- Splash! at Lively Park
- Willamalane Center
- Willamalane Park Swim Center

PLUS more special deals with Eugene Emeralds, and Lane United Football Club

**1 PASS** is nontransferable. Good 5/30-9/5/16. Other rules and restrictions may apply.



### Science Factory’s New Exhibit: “Tapping Into Clean Water”

The Science Factory is located south of Autzen Stadium in Alton Baker Park at 2300 Leo Harris Parkway. See [www.sciencefactory.org](http://www.sciencefactory.org) for times and admission.

# Summer Event Calendar

## Vineyards & Violins

Saturday, May 7, 5-8 p.m.

Adult Activity Center, 215 W. C St.

\$20 in advance; \$25 day of event

Browse a huge array of silent auction items including weekend getaways, restaurant gift certificates, golf, entertainment, gifts and much more. Listen to violin music from members of the Eugene Symphony while enjoying a buffet of delicious hors d'oeuvres and desserts accompanied by wine or sparkling cider. 541-736-4444 willamalane.org

## Mother's Day Tea

Saturday, May 7, 11 a.m.-1 p.m.

Dorris Ranch barn

\$5 in-district; \$6 out-of-district

Spend the afternoon honoring that special lady in your life. Enjoy sweet and savory treats in the historic Dorris Ranch barn. Pose in our old-time photo booth while listening to live music, and at the end of the day take home a special craft. Register in advance at willamalane.org. 541-736-4544

## Downtown Springfield Second Friday Artwalk

May 13, 5-8 p.m., free

## History Spoken Here!

Dorris Ranch

May 14, June 11, July 9, Aug. 13 at 10 a.m.

Join us the second Saturday of each month, when Living History staff will be available for tours and walks through the ranch and its historic structures. Free. All ages. 541-736-4544 • willamalane.org

## SAFE Kids Coalition Safety Fair

Saturday, May 21, 10 a.m.-3 p.m.

Willamalane Center, 250 S. 32nd St.

Enjoy demos on topics ranging from bike safety to ATV safety, and greet representatives of the Eugene/Springfield Fire Department, Life Flight and more.

## Downtown Springfield Second Friday Artwalk

June 10, 5-8 p.m., free

## Summer in the City

Saturday, June 4th

Kick your summer off in downtown Springfield. Discover something new, exciting and fun around every corner! Brunch, beer, wine, live music, shopping, tour the murals, sweet treats, demos, lawn games, face painting, yoga and beer event, door prizes. Free.

## The Merry Wives of Windsor

Saturday & Sunday, June 18-19, 6 p.m.

Island Park, 200 W. B St.

The Roving Park Players present the Shakespeare classic adapted and directed by Laura Robinson. Rain or shine (canopies provided). Free. 541-556-9686



## Summer Solstice Dash & Bash

Monday, June 20, 5-8 p.m.

5K starts at 6:20 p.m.

Dorris Ranch

Run or walk a 5K through beautiful Dorris Ranch to support Umpqua Bank's Snack Pack Program, distributed through FOOD for Lane County. After the race, sit back and enjoy a free community concert by Sugar

Sauce and choose your dinner from one of our vendors. Advance registration is \$20 for the run only; \$35 for the run and a short-sleeved tech shirt. Finishers receive a complimentary beverage. Teams compete for prizes. 541-736-4544 • willamalane.org



## Movie: Indiana Jones and the Raiders of the Lost Ark

Friday, July 8

Island Park, 200 W. B St.

Rated PG, 115 minutes. Presented with Spanish subtitles. 7:30 p.m. activities: Play archaeologist with representatives of the University of Oregon Museum of Natural and Cultural History. We'll also

have a photo opportunity to document you and your adventure gear. Movie begins at approximately 8:30 p.m. Free. 541-736-4544 • willamalane.org

## Tommy Hogan Concert

Wednesday, July 13, 6:30-8 p.m.

Jesse Maine Park, South 69th Place

Hogan delivers a power-packed punch of authentic rockin' and soulful blues, funk and Americana. Free. 541-736-4544 • willamalane.org

## LIGHT OF LIBERTY



REYNOLDS PARKER

Monday, July 4

Island Park, 200 W. B St.

Gates open at 4 p.m.; live music begins at 5 p.m.

Fireworks at 10 p.m.

The Lovin' Spoonful headlines a spectacular show of music and lights. Enjoy a food court featuring local favorites, and children's area with pony rides, magic shows, music, balloon arts, crafts, inflatables and more. Tickets on sale starting June 20. Admission: \$8 (advance tickets \$5). Kids under five, free. subutil.com

## Summer Reading Kickoff

Tuesday, June 21, 1-3 p.m.

Springfield Public Library, 225 N. 5th St.

On your mark, get set, READ! The kickoff event begins the summer reading program for kids, teens and adults. Sign up for the reading program and enjoy hands-on activities presented by Willamalane. Yes, physical activity and reading can mix! Free. 541-726-3766 • where-mindsgrow.org

## Springfield 800

July 5 in Downtown Springfield

Community race and party

## M80s Concert

Wednesday, July 6, 6:30-8 p.m.

Willamalane Park, 1276 G St.

Fronted by a former ballet dancer, two keyboardists and a five-vocalist attack, the M80s are a combination as versatile as a Rubik's Cube. Those '80s dance tunes bring on the FUN! Free. 541-736-4544 • willamalane.org

## Downtown Springfield Second Friday Artwalk

July 8, 5-8 p.m., free

## Movie: Big Hero 6

Friday, July 15

Douglas Gardens Park, 3455 Redwood Drive

PG, 102 minutes. Presented with Spanish subtitles. 6:30 p.m. activities: Baymax isn't the only awesome inflatable thing coming to Douglas Gardens. Take a turn on a 55-foot inflatable obstacle course! Movie begins at approximately 8:30 p.m. Free. 541-736-4544 • willamalane.org



## South Hills String Band Concert

Wednesday, July 20

Douglas Gardens Park

This contemporary four-piece walks the line between early bluegrass and Ozark-style string band music. Influences range from Cajun to swing, bluegrass to early blues. Free. 541-736-4544 • willamalane.org

## Movie: Hook

Friday, July 22

Royal Delle Park, 401 Blackstone St.

PG, 144 minutes. It's a treasure hunt! Before the movie, pick up a map (or download one at willamalane.org) and navigate your way to hidden treasure in the park. Don't worry, you won't have to fight Captain Hook for these goodies. If hunting for treasure isn't for you, you can still join in on the fun by singing along to pirate songs. The movie begins at approximately 8:30 p.m. Free. 541-736-4544 • willamalane.org

## Coupe de Ville Concert

Wednesday, July 27, 6:30-8 p.m.

Lively Park, 6100 Thurston Road

From doo-wop to rockabilly and Elvis to ZZ Top, this band covers all of the artists and the songs you love to dance to and sing along with. Free. 541-736-4544 • willamalane.org

## Movie: Toy Story

Friday, July 29

Ruff Park, 1161 66th St.

Rated G, 81 minutes. Presented with Spanish subtitles. 7:30 p.m. activities: Be a cowboy, just like Woody! The Eugene Pro Rodeo Kids Club will lead a roping demonstration. Free. 541-736-4544 • willamalane.org



## Summer Event Calendar



### Children's Celebration and National Night Out Kick-Off Event

Saturday, July 30, 10 a.m.-3 p.m. • Island Park

Families will enjoy this new twist on an old favorite! Experience hands-on activities from more than 60 community exhibitors. Free with a canned food donation for FOOD for Lane County. 541-736-4544 • willamalane.org



### Hailey Verhaalen Band

Wednesday, Aug. 3, 6:30-8 p.m.  
Dorris Ranch, 205 Dorris St.

Verhaalen, who has performed at Oregon's biggest rodeos and in Nashville, Tennessee, delivers tightly crafted, catchy songs that lift her above the norm of today's pop country. Free. 541-736-4544 • willamalane.org



### Movie: Cool Runnings

Friday, Aug. 5  
Fort Park, 300 58th St.

Rated PG, 98 minutes. 7:30 p.m. activities: Get into the Olympic spirit with the Willamalane Games! Events start at 7:30 p.m., so be sure to arrive early if you would like to compete. The movie begins at approximately 8:30 p.m. Free. 541-736-4544 • willamalane.org

### Cabela's Family Campout

Aug. 5-6, 5 p.m.-8 a.m.  
Clearwater Park

Load up the gear and bring the family down for a good time in the outdoors. Cabela's will be on hand to provide fun and games for the kids. No food provided. Register in advance at willamalane.org; space is limited. \$5 per person. 541-736-4544

### Son de Cuba Concert

Wednesday, Aug. 10, 6:30-8 p.m.  
Meadow Park, 851 Mill St.

This high-energy quartet plays a happy, danceable blend of salsa, merengue, cumbia and Latin jazz. Free. 541-736-4544 • willamalane.org

### Downtown Springfield Second Friday Artwalk

Aug. 12, 5-8 p.m. Free.



### Movie: Rio

Friday, Aug. 12  
Pacific Park, 220 Shadylane Drive

Rated G, 96 minutes. Presented with Spanish subtitles. 8 p.m. activities: With the 2016 Summer Olympics occurring in Rio de Janeiro, all eyes will be on Brazil. We couldn't pass up the opportunity to bring a little Rio to Springfield. Before the movie, the park will come to life with music and a samba lesson. The movie begins at approximately 8:30 p.m. Free. 541-736-4544 • willamalane.org

### People, Parks & Play

Willamalane exhibit at Springfield Museum  
590 Main St.

Exhibit: Aug. 12-Sept. 30, Opening reception: Friday, Aug. 12, 5-8 p.m., during the Second Friday Artwalk Museum hours: Tuesday-Thursday, 11 a.m.-4 p.m., Friday, 11 a.m.-6 p.m., Saturday, 10 a.m.-4 p.m.



### Eugene Symphony Connect Concert

Wednesday, Aug. 17, 6:30-8 p.m.  
Island Park, 200 W. B St.

Eugene Symphony presents Symphony Connect, a new chamber music initiative that features programming beyond the concert hall. Expect classic sounds with a modern twist. Free. 541-736-4544 • willamalane.org

### Movie: Grease singalong

Friday, Aug. 19  
Willamalane Center

Rated PG, 110 minutes. 7:30 p.m. activities: Come dressed in your Rydell High best for a chance to win prizes in the costume contest! You can even learn how to Hand Jive before the movie. Check out the classic cars motoring in for the Springfield Car Cruise on Aug. 20. Movie begins at approximately 8:30 p.m. Free. 541-736-4544 • willamalane.org



### Little Women

Saturday and Sunday, Aug. 20-21, 6 p.m.  
Island Park, 200 W. B St.

Adapted and directed by Vicki Harkovitch. Share the joys and sorrows of one of American literature's first families in this Louisa May Alcott classic presented by the Roving Park Players. Rain or shine (canopies provided). Free. 541-914-2374

### Springfield Car Cruise and Show and Shine

Saturday, Aug. 20  
Downtown Springfield  
541-954-0762

### Tap & Taste

Saturday, Aug. 27, 5-10 p.m.  
Downtown Springfield, 5th and A streets

Be a part of Springfield's premiere food and drink celebration! Sample small plates and tasty bites from some of your favorite local restaurateurs. Enjoy live, local music throughout the night. All attendees will receive a souvenir glass and taste tickets. Additional taste tickets available for purchase. \$15 in advance/\$20 at the gate. 541-736-4544 • willamalane.org

### SpringFilm Series

Wildish Community Theater,  
630 Main St. 6:30-9 p.m.

The 2015-16 SpringFilm theme is Cult Cinema. SpringFilm is a partnership with the Springfield Public Library and Willamalane. Each showing features a unique introduction by a special guest speaker, and films will be followed by a moderated discussion. Free.

Taxi Driver, Thursday, May 5  
The Big Lebowski, Thursday, June 2  
Bottle Rocket, Thursday, July 7  
Road Warrior, Thursday, Aug. 4



## Park, Trail Construction Picking up for Season

**WILLAMALANE PARK AND RECREATION DISTRICT** | Construction on Willamalane Park and Recreation District parks and trails is scheduled to take place throughout the city this summer. Meadow Park will get a new playground with new pathways connecting the playground, restroom and baseball fields. Work is also scheduled on the Mill Race Path, a 3-mile walking and bicycling path that will stretch from downtown to the Middle Fork Path along the historic Springfield Mill Race, with access to Dorris Ranch and Clearwater Park. At Island Park, plans call for a

new playground with a sand play area, seating and walkways. Staff are also completing the Thurston Hills Natural Area Management Plan and intend to construct the initial trail system this summer. The first trail will begin at a trailhead constructed at the base of the Thurston Hills near the intersection of Highway 126 and 75th Street. The trail, expected to be popular with hikers and mountain bikers, will head south up the hill to the ridgeline. The work is funded in part by the \$20 million bond measure voters passed in 2012.

## Springfield Public Schools #SPSDidYouKnow



#SPSDidYouKnow  
SPS students have created 10 public murals in Springfield?

#SPSDidYouKnow  
SHS and THS have 15 different band ensembles and 10 choir ensembles to choose from?

#SPSDidYouKnow  
SPS has given away more than 11,000 books over the last 10 years of the Gift of Literacy? Thank you, Springfield Rotary and donors!

#SPSDidYouKnow  
SHS and THS offer more than 50 career/technical classes?  
• auto • wood  
• metals • marketing  
• bookkeeping • welding  
• circuits • robotics

Stay up-to-date with SPS happenings!



www.springfield.k12.or.us



## Liberate Some Cash for Your Cause this July 4th!

### SPRINGFIELD UTILITY BOARD

SUB's 13th annual Light of Liberty Celebration is coming to Springfield's beautiful Island Park this July 4, and we hope you'll be there! Watch for details on SUB's Facebook page ([www.facebook.com/SpringfieldUtilityBoard](http://www.facebook.com/SpringfieldUtilityBoard)) and in the summer edition of SUB's customer newsletter. If you are involved in a school-related (or other formally organized) sports team or club and would like to learn more about volunteering as a fundraiser for your group, please call Diana Olson at 541-744-3602 for information.

### Light of Liberty Celebration

Monday, July 4  
Gates open at 4 p.m.  
Adults, \$7 (advance tickets \$5); kids two and under free

Join Springfield Utility Board for a day of music, food, fireworks and fun! Live music, huge kids area. Rock and Roll Hall of Famers **The Lovin' Spoonful** at 8 p.m. **Fireworks** at 10 p.m.



## Summer Fun for Kids in Neighborhood Parks

Willamalane Park and Recreation District's free Summer Playground Program continues this year at nine neighborhood sites. The program offers organized activities for kids in grades 1 through 5 to help them stay active, socialize, sharpen literacy skills and exercise creativity. The program runs July 5 to Aug. 25, from 10 a.m. to 3 p.m. Willamalane staff supervise and lead activities. Register in advance at Willamalane Center through July 1, or at the park sites beginning July 5. For information, call 541-736-4544.

<b>Douglas Gardens Park</b>	3455 S. Redwood Drive
<b>Guy Lee Park</b>	890 Darlene St.
<b>Jasper Meadows</b>	South 57th St.
<b>Jesse Maine Park</b>	South 69th Place
<b>Pacific Park</b>	Shadylane Drive
<b>Page Park</b>	1300 Hayden Bridge Road
<b>Riverbend Elementary</b>	51st Street
<b>Thurston Park</b>	6329 F St.
<b>Willamalane Park</b>	1276 G St.

Many of the playground sites are supported by FOOD for Lane County and the USDA's Summer Food Program. Call FOOD for Lane County at 541-343-2822 for specific locations.

### What is TEAM Springfield?

"TEAM Springfield means working together to improve the lives of people who live, work and visit our community."

—Gino Grimaldi,  
Springfield City Manager

Photo courtesy of Brian Davies/Register Guard

## Connect with TEAM Springfield on Social Media

Ask questions, alert us to your concerns and get the scoop on interesting events when you connect with TEAM Springfield agencies on Facebook, Twitter and YouTube.

	Facebook	Twitter	YouTube
City of Springfield	facebook.com/springfieldor	twitter.com/spfldoregon	youtube.com/springfieldoregon
Springfield Police Dept.	facebook.com/springfieldpolicedepartment facebook.com/springfieldanimalcontrol	twitter.com/spdoregon	
Springfield Public Library	facebook.com/springfieldpubliclibrary	twitter.com/wheremindsgrow	
Springfield Public Schools	facebook.com/springfieldps	twitter.com/springfieldps twitter.com/springfieldsupt	youtube.com/springfieldps1
Springfield Utility Board	facebook.com/springfieldutilityboard	twitter.com/subutil	
Willamalane	facebook.com/willamalane	twitter.com/willamalane	youtube.com/willamalane



This newsletter is a twice-yearly publication of TEAM Springfield, a unique collaboration of the city's four public agencies. Together, we share ideas, energy and resources to deliver projects that benefit our community. For more information, visit [www.teamspringfield.org](http://www.teamspringfield.org).